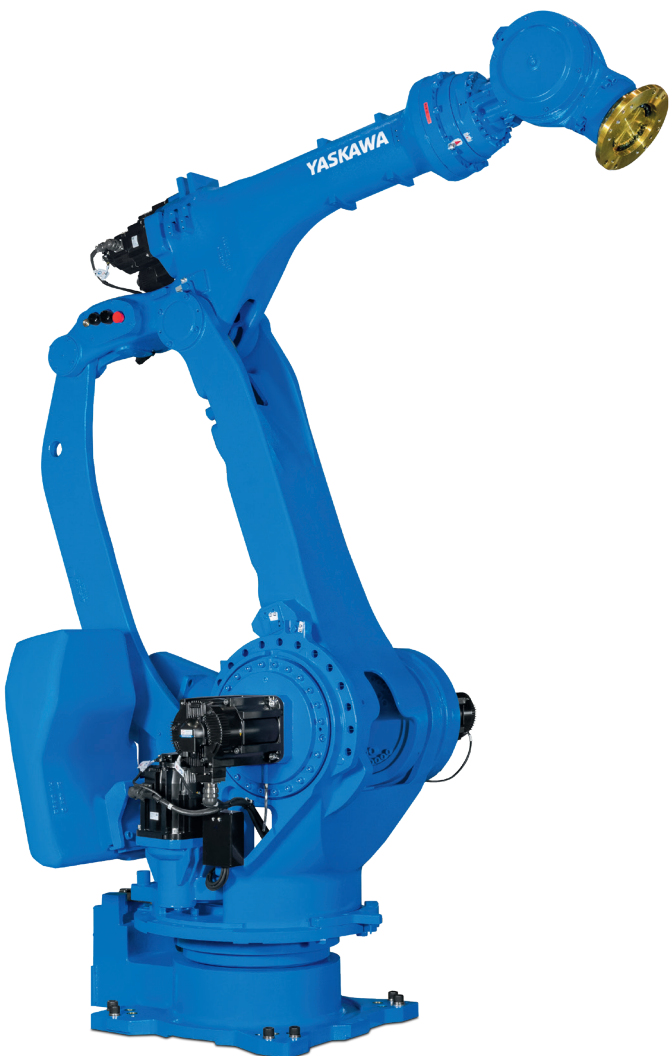


MOTOMAN GP360

Handling & General Applications
with the GP Series



The MOTOMAN GP360 6-axis robot is a powerful and versatile industrial robot that is ideal for a wide range of applications. The product features a high payload of 360 kg and a large working range.

The robot is an allrounder and ideal for a wide range of applications, including material handling, machine tending, assembly, and dispensing as well as palletizing tasks. It is particularly well suited for handling large workpieces, such as heavy battery modules or vehicle components in the automotive industry.

Thanks to its parallel kinematics, the robot offers high rigidity and stability when handling loads with high moments of inertia. Robust swivel bearings ensure smooth and reliable arm movement.

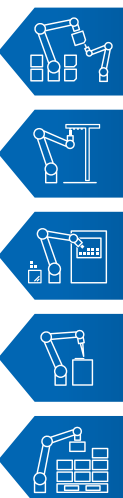
The GP360 is optionally available with the PLd, Category 3 »Functional Safety Unit (FSU)« for extended safety functions.

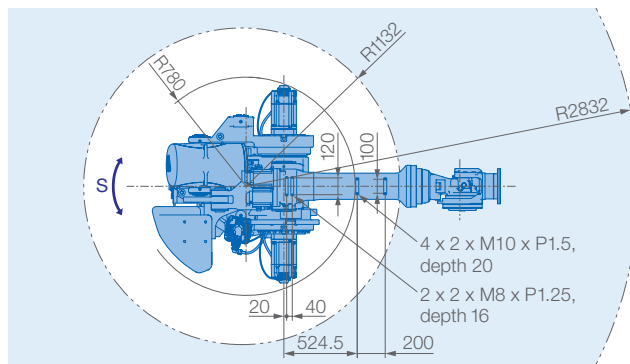
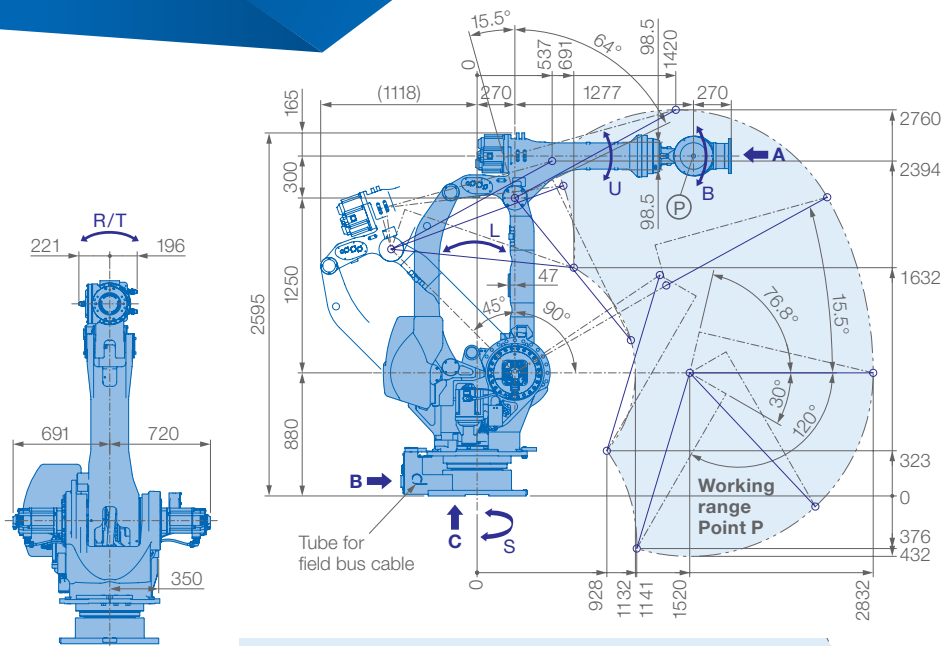
KEY BENEFITS

- Fast, flexible, and powerful
- High payload: 360 kg
- Large working range: 2,832 mm
- Parallel link design for high stability
- Heavy-duty swivel bearings for smooth arm rotation
- Advanced safety functions (PLd, Category 3 FSU available)

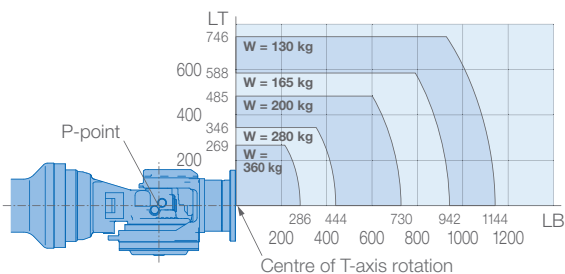
TYPICAL APPLICATIONS

- Material Handling
- Assembly
- Machine Tending
- Dispensing & Glueing
- Palletizing / Packaging

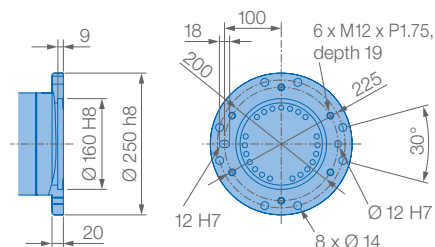




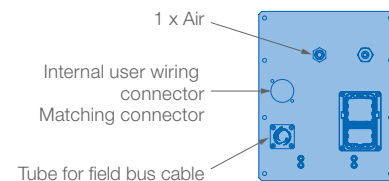
Allowable wrist load



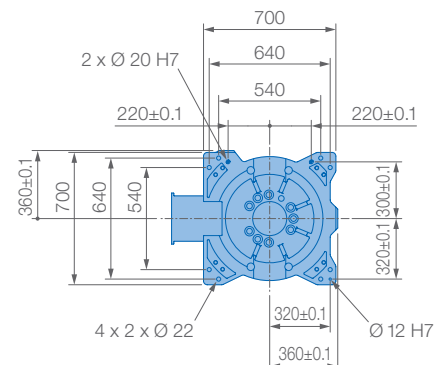
View A



View B



View C



Mounting options: Floor
IP Protection: IP67 (wrist), IP54 (body)



Specifications GP360

Axes	Maximum motion range [°]	Maximum speed [°/s]	Allowable moment [Nm]	Allowable moment of inertia [kg · m ²]	Controlled axes	6
S	±180	110	—	—	Max. payload [kg]	360
L	+90/-45	90	—	—	Repeatability [mm]	±0.1
U	+15.5/-120	90	—	—	Max. working range R [mm]	2832
R	±360	125	1960	260	Temperature [°C]	0 to +45
B	+125	125	1960	260	Humidity [%]	20 – 80
T	±360	205	950	180	Weight [kg]	2380
					Max. connected load [kVA]	7.5

Robotics Division

YASKAWA Europe GmbH
Yaskawastraße 1
85391 Allershausen, Germany
Tel. +49 (0) 8166/90-0
Fax +49 (0) 8166/90-103
robotics@yaskawa.eu
www.yaskawa.eu

YASKAWA Headquarters Academy and Sales Office

YASKAWA Europe GmbH
Philipp-Reis-Straße 6
65795 Hattersheim am Main,
Germany
Tel. +49 (0) 6196/77725-0
Fax +49 (0) 6196/77725-39

All drawing dimensions in mm. Technical data may be subject to change without previous notice. Please request detailed drawings at robotics@yaskawa.eu.

YR-1-06VX-360-D00
A-09-2025, A-No. 231076



YASKAWA