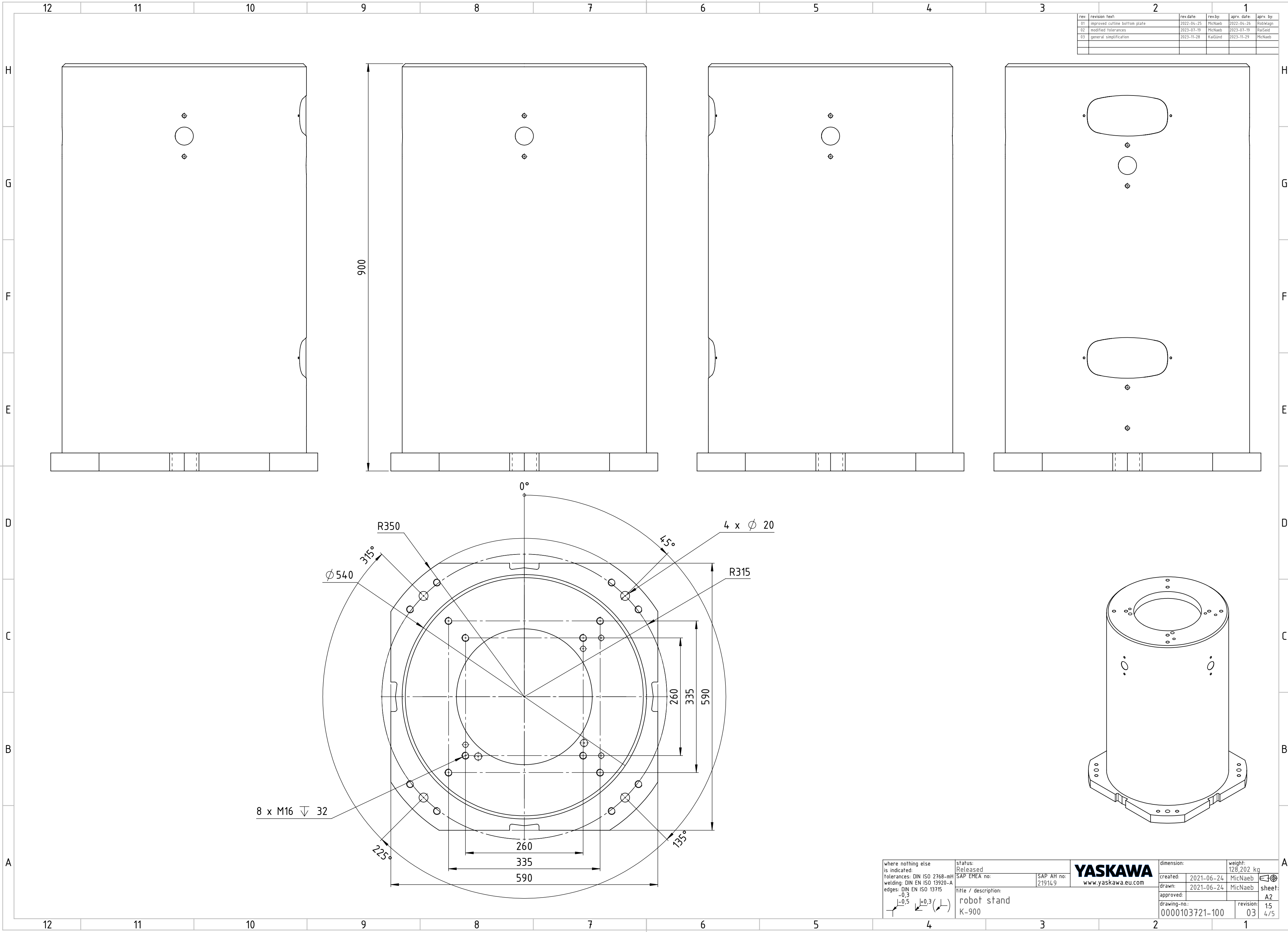


CONFIDENTIAL The reproduction, distribution and utilization of this document as well as the communication of its contents to others without express authorization is prohibited. Offenders will be held liable for the payment of damages. All rights reserved in the event of the grant of a patent, utility model or design

drawing: kuroda_marcus_210105, version: 01.1, last saved: 12/12/2021 09:24:55, model: kuroda_marcus_210105, version: 00.2, last saved: 11/12/2021 09:23:33



rev:	revision text:	rev.date:	rev.by:	aprv. date:	aprv. by:
01	improved cutline bottom plate	2022-04-25	MicNaeb	2022-04-26	RobWagn
02	modified tolerances	2023-07-19	MicNaeb	2023-07-19	RaSeid
03	general simplification	2023-11-28	KaiGund	2023-11-29	MicNaeb

where nothing else is indicated: tolerances: DIN ISO 2768-mH welding: DIN EN ISO 13920-A edges: DIN EN ISO 13715 -0,3 -1,5 +0,3 (L)		status: Released SAP EMEA no:		SAP AH no: 219149	YASKAWA www.yaskawa.eu.com	dimension:	weight: 128,202 kg
title / description: robot stand K-900		created:		2021-06-24		created:	2021-06-24
		drawn:		2021-06-24		drawn:	2021-06-24
		approved:				approved:	
		drawing-no.:		0000103721-100		revision:	03
						sheet:	A2
						revision:	1.5
						sheet:	4/5